

Screwless SSR Terminal Block (4-point)



ASL Series CATALOG

For your safety, read and follow the considerations written in the instruction manual, other manuals and Autonics website.

The specifications, dimensions, etc. are subject to change without notice for product improvement. Some models may be discontinued without notice.

Features

- Selectable between independent, NPN (+ COM)/PNP (- COM) input, and load common output with use of jumper bar
- High tensile force and easy wiring with one-touch screwless type terminal
- Easily check of operation status with operation indicator (blue)
- DIN rail mount and screw mount methods
- SSR protection with the cover
- Easy SSR replacement with the SSR ejector

Ordering Information

This is only for reference, the actual product does not support all combinations. For selecting the specified model, follow the Autonics website.

ASL - L 04 ① - U ②

- ① SSR type
MP0: AQZ202D (Panasonic)
SP0: AQG12124 (Panasonic)
ST0: SN-24A01C (Fujitsu)
- ② Varistor
N: None
Y: Equipped

Product Components

- Product
- Instruction manual
- 6.0 mm pitch jumper bar (JB-6.0-04L)
- Two Way Ejector

Specifications

Model	ASL-L04MP0-U□	ASL-L04SP0-U□	ASL-L04ST0-U□
Applied SSR ⁰¹⁾	AQZ202D [Panasonic]	AQG12124 [Panasonic]	SN-24A01C [Fujitsu]
Output method	1a	1a	1a
Power supply	≤ 24VDC ± 10%	≤ 24VDC ± 10%	≤ 24VDC ± 10%
Current consumption ⁰²⁾	≤ 3 mA	≤ 18 mA	≤ 10 mA
Rated load voltage & current ^{03) 04)}	60 VAC ~ 50/60 Hz 2.7 A, 60 VDC ± 2.7 A	75-240 VAC ~ 1 A 50/60 Hz	24-240 VAC ~ 1 A 50/60 Hz
Terminal type	Screwless		
Terminal pitch	5.0 mm		
Indicator	Operation indicator: blue		
Varistor	Equipped ⁰⁵⁾ / not equipped model		
Input logic	NPN / PNP selectable with jumper bar		
Material	Terminal block: PA66, CASE, BASE: PPS, conducting plate: brass		
Approval	CE, EAC	CE, EAC	CE, EAC
Unit weight (packaged)	≈ 65 g (≈ 118 g)	≈ 69 g (≈ 122 g)	≈ 172 g (≈ 126 g)

- 01) For the detailed information about each SSR, please refer to 'SSR' or data sheet from the manufacturer.
- 02) It is current consumption for a SSR including LED current.
- 03) This value is rated with resistive load, when the conditions of the temperature characteristic graph are satisfied.
- 04) When connecting loads to output part, please connect loads of same power type. Connecting loads of different power type may cause safety issues.
- 05) Since the varistor type is for protecting the contact, it is recommended to use with an inductive load.

Insulation resistance	≥ 1,000 MΩ (500 VDC = megger)
Dielectric strength (coil-contact)	2,500 VAC ~ 50/60 Hz for 1 minute
Dielectric strength (same polarity contact) ⁰¹⁾	1,000 VAC ~ 50/60 Hz for 1 minute
Vibration	0.75 mm amplitude at frequency of 10 to 55 Hz (for 1 min) in each X, Y, Z direction for 2 hours
Vibration (malfunction)	0.75 mm amplitude at frequency of 10 to 55 Hz (for 1 min) in each X, Y, Z direction for 10 minutes
Shock	1,000 m/s ² (≈ 100 G) in each X, Y, Z direction for 3 times
Shock (malfunction)	100 m/s ² (≈ 10 G) in each X, Y, Z direction for 3 times
Ambient temperature	-15 to 55 °C, storage: -25 to 65 °C (no freezing or condensation)
Ambient humidity	35 to 85 %RH, storage: 35 to 85 %RH (no freezing or condensation)
Protection structure	IP20 (IEC standard)

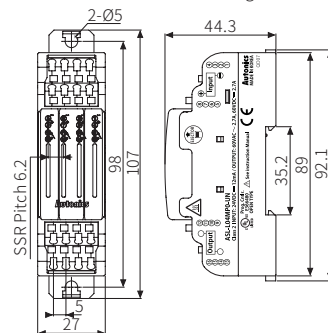
01) Varistor type is 300 VAC ~.

Applicable wire - solid ⁰¹⁾	∅ 0.6 to 1.25 mm
Applicable wire - stranded ^{01) 02)}	AWG 22-18 (0.30 to 0.80 mm ²)
Stripped length	8 to 10 mm

- 01) Use the cable of copper conductor in 60 °C temperature class.
- 02) When using the stranded wire, use End Sleeve (wire ferrule).

Dimensions

- Unit: mm, For the detailed drawings, follow the Autonics website.



High Temperature Caution
While supplying power to the load or right after turning off the power of the load, do not touch the body and heat sink. Failure to follow this instruction may result in a burn due to the high temperature.

Sold Separately

- 6.0 mm pitch jumper bar (JB-6.0-04L)
- DIN Rail bracket (ST-D)

6.0 mm Pitch Jumper Bar (JB-6.0-04L)

Remove the protection cover and use the jumper bar accordingly.

- NPN (+ COM): insert the jumper bar to see NPN mark below terminals 8, 7, 6, 5.
- PNP (- COM): insert the jumper bar to see PNP mark below terminals 8, 7, 6, 5.
- LOAD COMMON: insert the jumper bar above terminals 12, 11, 10, 9.

